

MONTHLY MEMBERSHIP PROGRESS REPORT

LOCATION INDIA

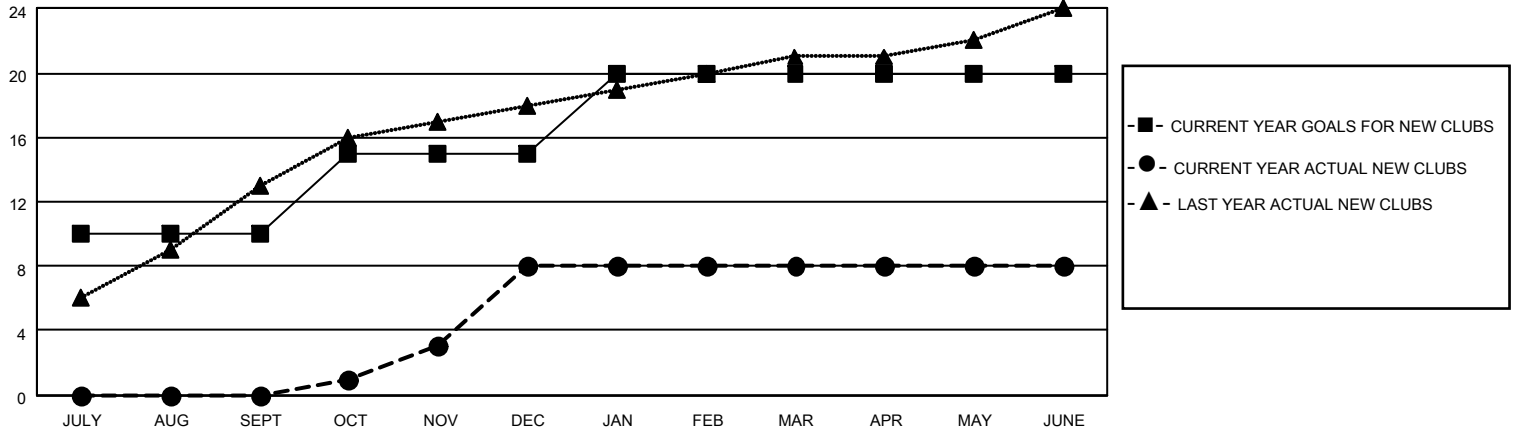
District 317 A

Results as of: 6/30/2023

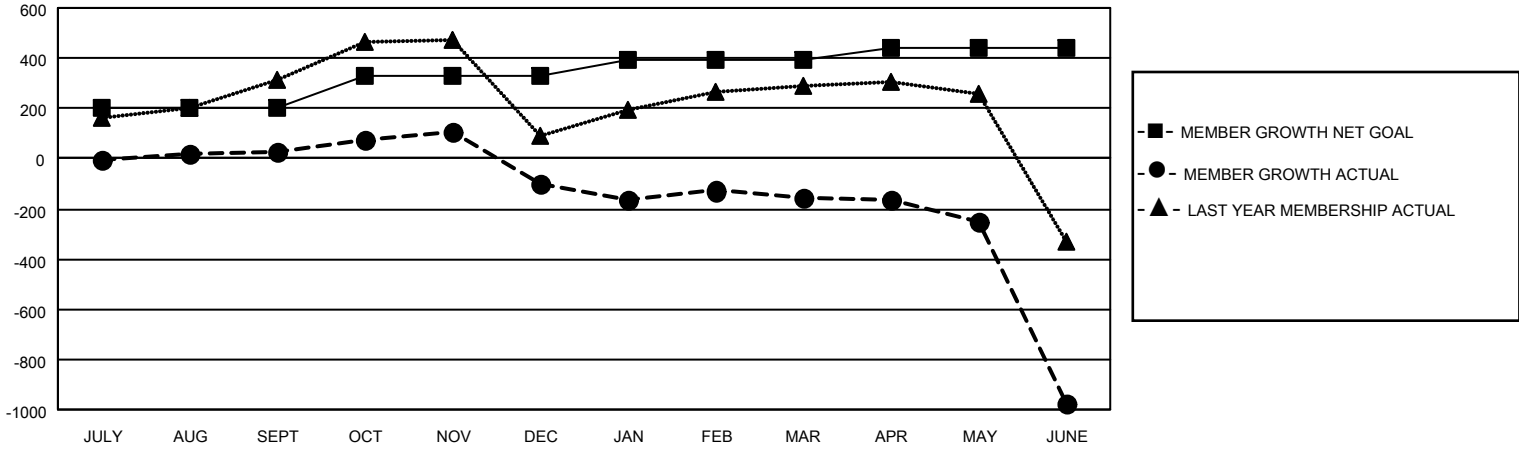
| Clubs | | | |
|-----------------------|---------------|-----------|---------------|
| RESULTS FOR 2022-2023 | | | |
| QUARTER | NEW CLUB GOAL | NEW CLUBS | DROPPED CLUBS |
| JULY/AUG/SEPT | 10 | 0 | 0 |
| OCT/NOV/DEC | 5 | 8 | 9 |
| JAN/FEB/MAR | 5 | 0 | 1 |
| APR/MAY/JUNE | 0 | 0 | 15 |

| Members | | | |
|-----------------------|------------------------|----------------------|---|
| RESULTS FOR 2022-2023 | | | |
| QUARTER | MEMBER GROWTH NET GOAL | MEMBER GROWTH ACTUAL | DROPPED MEMBERS ACTUAL (including transfers) |
| JULY/AUG/SEPT | 200 | 186 | 147 |
| OCT/NOV/DEC | 130 | 314 | 436 |
| JAN/FEB/MAR | 60 | 116 | 167 |
| APR/MAY/JUNE | 50 | 40 | 842 |

GOALS AND ACTUAL NEW CLUBS CUMULATIVE



GOALS AND ACTUAL MEMBERS CUMULATIVE



DROPPED CLUBS: 25

102 CLUBS OF 189 ADDED 1 OR MORE NEW MEMBERS

GENDER DISTRIBUTION

| | |
|----------------------|----------------|
| MALE | 2,982 (67.90%) |
| FEMALE | 1,410 (32.10%) |
| NON BINARY | 0 (0.00%) |
| PREFER NOT TO ANSWER | 0 (0.00%) |

DROPPED MEMBERS

[CLICK HERE FOR CUMULATIVE MEMBERSHIP DATA](#)

| | |
|----------------|--------------|
| DECEASED | 22 |
| CLUB CANCELLED | 515 |
| OTHER | 1,058 |
| TOTAL | 1,595 |

TOTAL FAMILY UNIT MEMBERS 1,778

FAMILY MEMBERS PAYING HALF DUES 976